

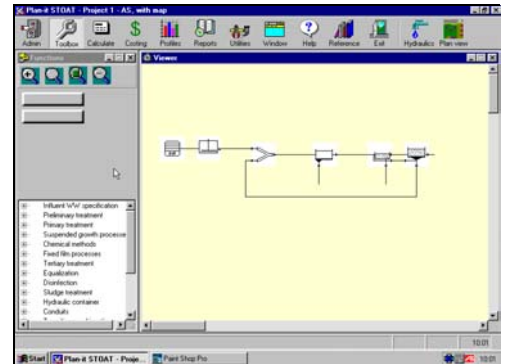
Plan-It STOAT™

Process Models:

- Grit trap
- Screen
- Primary settlement
- Ballasted flocculation
 - Chemically-enhanced primary sedimentation
- Chemical P removal
- Activated sludge
 - oxidation ditches, AO, UCT, MLE, Bardenpho and other BNR configurations
- Denitrification
- Selectors
- SBRs
- Secondary sedimentation
- Trickling filters
- BAFs
- Lagoons
- Sand filtration
- Flow balancing
- UV disinfection
- Chlorine disinfection
- Aerobic digestion
- ATAD
- Thickening
- Dewatering
- Post-aeration
- Hydraulic elements
 - Channels and pipes
 - Transitions and junctions
 - Expansions
 - Contractions
 - Bends
 - Valves
 - Pumps
 - Weirs

A computer tool for rapid evaluation of wastewater treatment plant design and configuration options

Process Selection



Preliminary Hydraulics



Cost Comparison

Contact WRC:

WRC plc
Frankland Road
Blagrove Swindon
Wiltshire SN5 8YF
Tel: +44 (0) 1793 865185
Fax: +44 (0) 1793 865001
planitstoat@wrcplc.co.uk
www.planitstoat.com

Contact Germany:

EnviaTec GmbH
Dr.-Ing. Olaf Sterger
Kanalstr. 6
12589 Berlin (Hessenwinkel)
Tel: +49 30 54 37 69 57
Mobil: +49 (0) 163 7 83 74 37
Fax: +49 30 54 37 69 58
sterger@enviatec.de

Plan-It STOAT™

Plan-It STOAT is an easy to use, Windows™ based, planning-level software model that is used to evaluate wastewater and water reclamation treatment process options. The model allows a user to prepare a preliminary hydraulic design so that plant pumping and elevation requirements can be established. The model also quickly calculates unit process sizes (area and volume), chemical and power requirements, estimates annual and capital costs based on user supplied cost input, and generates output files that are compatible with other computer models. Given unit process sizes, the model quickly calculates effluent quality.

Plan-It STOAT has three closely interrelated, operational modes:

- The first mode performs steady-state estimates of process performance given unit process sizes; or conversely, calculates preliminary unit process sizing given specific influent characteristics and desired effluent conditions. Plan-It STOAT does the basic process calculations, and calculates flow and mass balances on the treatment process.
- The second mode allows the user to define the sequence of hydraulic elements in the liquid treatment train, from which Plan-It STOAT prepares a preliminary hydraulic profile.
- The third mode presents an interactive site plan worksheet. A user inputs an existing site plan or aerial photograph for use as a base, onto which Plan-It STOAT overlays proportionally-sized geometric shapes, representing each treatment process. The user can move the process on the site plan, to assess the fit of each design option.