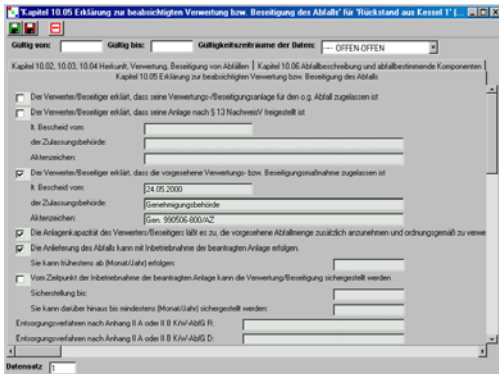
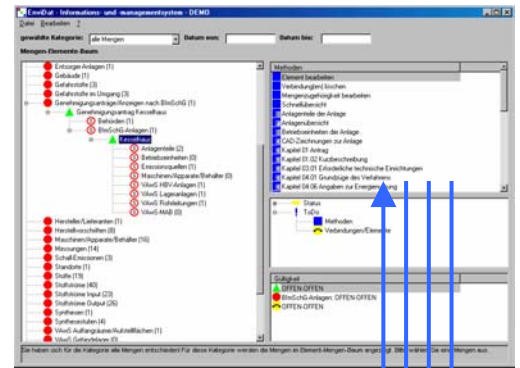


EnviDat

Features:

- Structure of the enterprise figured out by a Class-Object-Tree for overview at a glance and as a platform for starting all detail activities of the program
- All information and links may be covered by a beginning and a terminating time. This can be used for filtering of all items and activities.

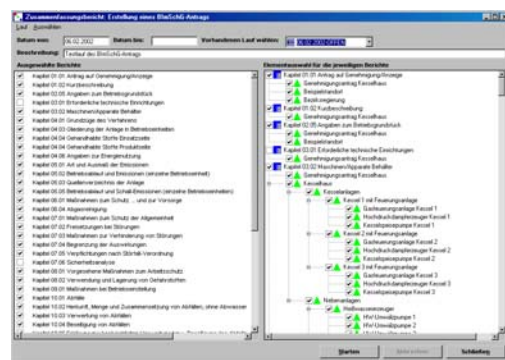
Environmental information and management system for free configuration by the customer



Miscellaneous methods of data input and output are at EnviDat's disposal. The customer is enabled to select appropriate forms and methods for handling different kind of data.

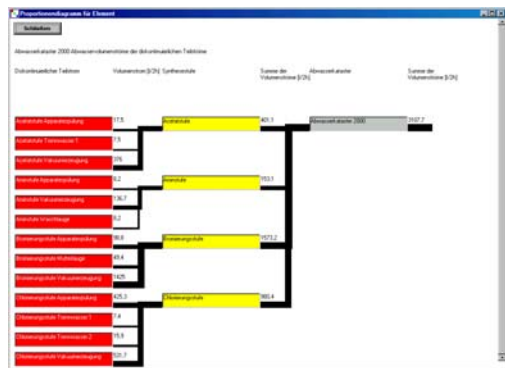
- Data input will be realised in single forms or register forms, chosen by the customer;
- Dialogs may behave as an overview in table form or as OLE container, co-operating with Microsoft® Word or Excel.

High complex and sophisticated document structures can be printed by EnviDat at one finger tip, for instance a complete application for operating permission of an installation according to the German Federal Immission Control Act. The customer is enabled to completely control the output, regarding both subjects and formalization.



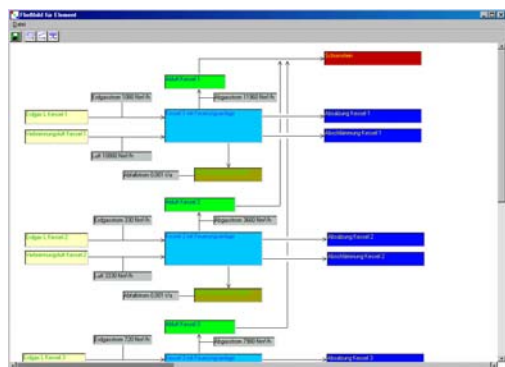
EnviDat draws so called Sankey diagrams in order to visualise flow streams of substances or energy:

- Results are shown by bars of a thickness proportionally to the load or power of the stream;
- needed calculations (for instance sum) are executed; links between the different flow streams are shown automatically;
- every start of the method will lead to a new calculation in order to ensure, that the diagrams are topically at every time.



EnviDat helps the customer to draw block diagrams according to DIN 28004 by presenting the elements of the Class-Object-Tree in a draft:

- Information of the data pool can be shown directly in the block diagram, for instance names and properties of flow streams;
- selecting different periods of validity reveals changes of the block diagram;
- to open the block diagram makes EnviDat creating and calculating a new sketch; what you see is what is topically.



EnviDat

EnviDat is a development shell for environmental information and management systems. It provides the customer with all tools for figuring out and assessing processes and data, relevant to the environment, including cross media effects.

Start of the work in EnviDat will be carried out in the Class-Object-Tree. It behaves similar to Microsoft® Windows explorer and contains all needed classes and objects of the reality you want to illustrate. The tree view provides a full overview to the customer, including the entire structure and all needed means for solving the topical tasks. As soon as you activate an item of the Class-Object-Tree on the left hand, you will get at your disposal all related methods, properties, workflows, and links on the right hand of the screen.

Data will be saved in a database, free for choice by the customer. All marketable relational database management systems are suitable, for instance Oracle, SQL Server, MS Access, or ODBC. This has been made possible by separating completely the EnviDat user interface from the overhead of the database. The database serves only as a repository, save/recall capability driven by Standard-SQL. This advantage also applies fully in case you want to handle data from outside EnviDat. It is very convenient to read data from strange programs or applications for further evaluation or assessment in EnviDat or to send data from EnviDat to other databases for use there.

Examples for EnviDat applications exist in the chemical industry as well as in the metal and melting industry or in the production of automobiles. EnviDat is used as a means to build up wastewater registers, to manage installations according to the German Federal Immission Control Act or to the Ordinance on Facilities for the Production, Treatment, Use and Storage of Substances hazardous to Water.

EnviDat is characterised by powerful possibilities to create extended routines or interfaces for secondary data exploitation. As an example you can make EnviDat to forecast volume and load of the influent of a WWTP based on the data of a wastewater register for different flow streams. In a similar way EnviDat can provide input values for activated sludge models of the International Water Association (IWA) for dynamic simulations.

Minimal system requirements:

Pentium 133 MHz, 32 MB RAM
30 MB free space on HDD
SVGA Monitor
Windows® 95 or higher
relational data base system, for instance MS Access, Oracle or SQL Server

Contacts:

EnviaTec GmbH
Dr.-Ing. Olaf Sterger
Kanalstr. 6
12589 Berlin (Hessenwinkel)
Tel.: +49 (0) 30 54 37 69 57
Fax: +49 (0) 30 54 37 69 58
sterger@enviatec.de

RISA GmbH
Dr.-Ing. Ulrich Hussels
Krumme Str. 55
10627 Berlin
Tel.: +49 (0) 30 31 57 06 14
Fax: +49 (0) 30 31 57 06 21
ulrich.hussels@risa.de